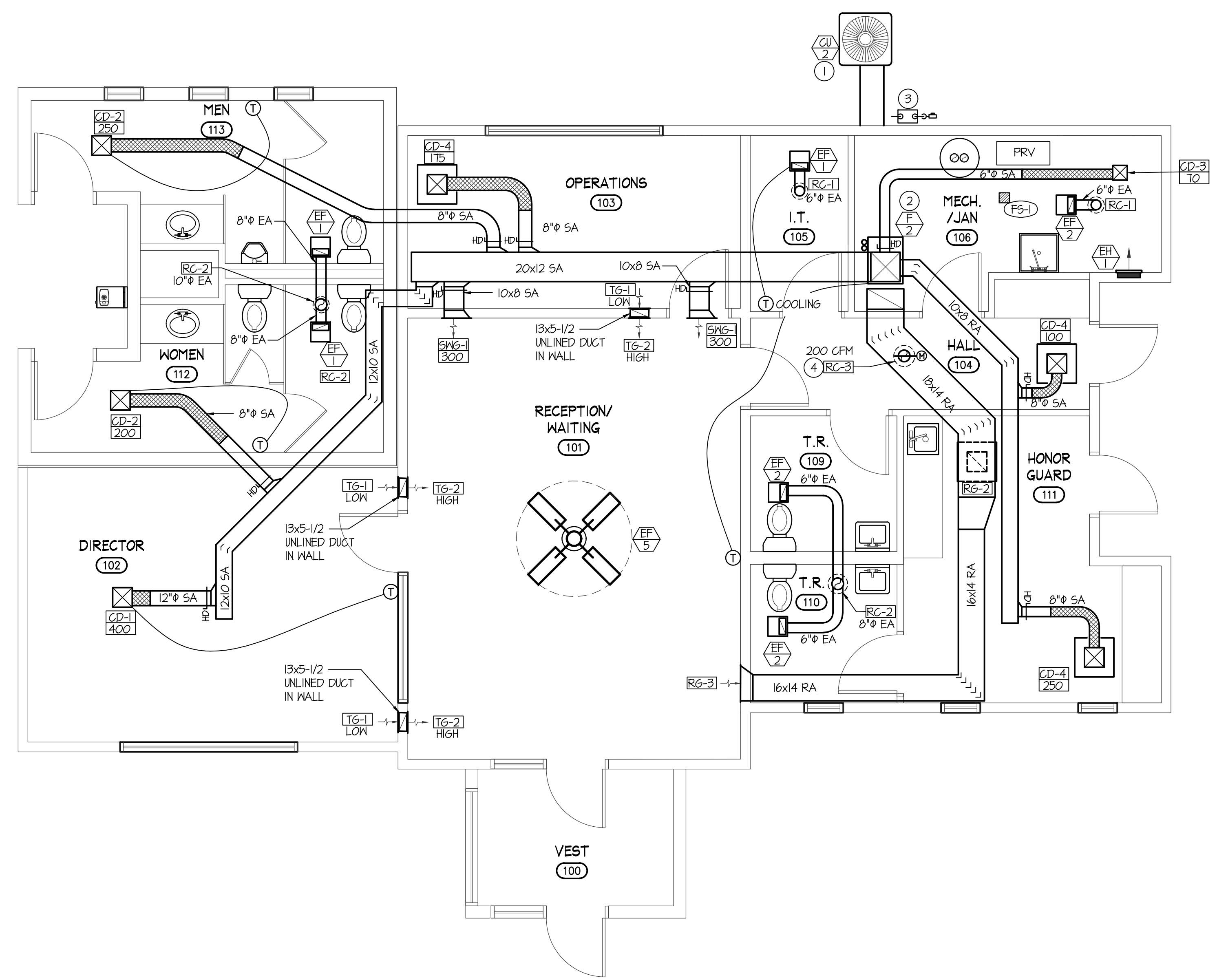


**ADD ALTERNATE #02 ADMINISTRATION BUILDING PLUMBING PLAN**  
SCALE: 1/4" = 1'-0"



**ADD ALTERNATE #02 ADMINISTRATION BUILDING MECHANICAL PLAN**  
SCALE: 1/4" = 1'-0"

- PLAN NOTES:**
1. PROVIDE AND INSTALL 4" CONCRETE PAD FOR NEW CONDENSING UNIT AND MOUNT UNIT ON 1" THICK NEOPRENE PADS UNDER EACH CORNER FOR VIBRATION ISOLATION. SEE DETAILS ON M2 FOR PIPE SUPPORT & COVER DETAILS.
  2. RUN SUPPLY & RETURN AIR DUCT IN CEILING SPACE
  3. GAS METER BY LOCAL GAS COMPANY SIZED FOR NOTED BTU AT 5 PSI DELIVERY PRESSURE.
  4. INSTALL ROOF CAP ON ROOF AND RUN 8" OUTSIDE AIR DUCT FROM ROOF CAP DOWN TO RETURN DUCT AND CONNECT. INSTALL MOTORIZED DAMPER ACCESS PANEL AND HAND DAMPER IN VERTICAL PORTION OF OUTSIDE AIR DUCT. INTERLOCK MOTORIZED DAMPER WITH FURNACE OPERATION AND BALANCE HAND DAMPER TO SPECIFIED CFM SHOWN. KEEP MIN 1' FROM EXISTING VENTS ON FLIES.
  5. PROVIDE & INSTALL SHUT OFF VALVE WITH ACCESS PANEL FOR HW & CW IN CEILING SPACE.
  6. SEE SITE PLAN FOR CONTINUATION.

**PLUMBING LEGEND**

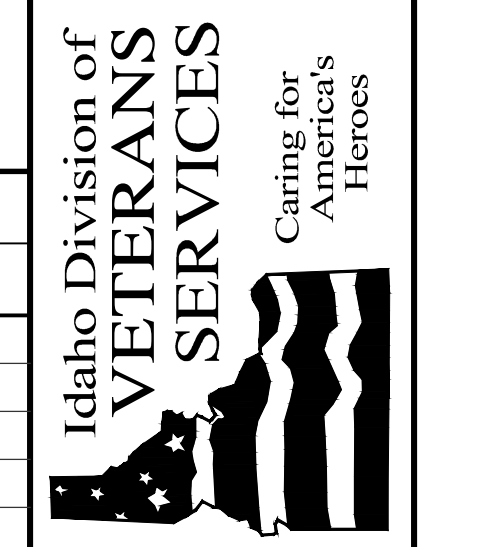
SYMBOL	DESCRIPTION
V	VENT
VTR	VENT THRU ROOF
CO	CLEANOUT
HC0	HALL CLEANOUT
COTG	CLEANOUT TO GRADE
○	PIPE DROP
○	PIPE RISE
○	BALL TYPE ISOLATION VALVE
---	SOIL OR WASTE PIPING
---	VENT LINE PIPING
---	DOMESTIC COLD WATER PIPING
---	FIRE SPRINKLER LINE
---	DOMESTIC HOT WATER PIPING
---	GAS PIPING
---	CONDENSATE DRAIN PIPING

**MECHANICAL LEGEND**

SYMBOL	DESCRIPTION
Ⓢ	ELECTRONIC THERMOSTAT
Ⓢ	EQUIPMENT SYMBOL
Ⓢ	HAND DAMPER
Ⓢ	ROUND BRANCH DUCT WITH HAND DAMPER
Ⓢ	INSULATED FLEXIBLE DUCT
Ⓢ	RETURN AIR OR EXHAUST GRILLE
Ⓢ	CEILING DIFFUSER
Ⓢ	ROOF MOUNTED UPBLAST EXHAUST FAN

**GENERAL NOTES:**

- THE CONTRACTOR SHALL CHECK AND VERIFY ALL DIMENSIONS AND CONNECTIONS ON THE JOB SITE. ALL WORK SHALL BE EXECUTED FROM MEASUREMENTS TAKEN AT THE SITE.
- THE MECHANICAL CONTRACTOR SHALL BE RESPONSIBLE TO INQUIRE PROPER CODE CLEARANCES FOR ELECTRICAL AND MECHANICAL ACCESS WHEN INSTALLING ANY EQUIPMENT SUPPLIED BY THE MECHANICAL CONTRACTOR.
- IT IS CRITICAL THAT THIS CONTRACTOR COORDINATE EQUIPMENT LOCATIONS WITH PIPING, DUCTWORK, ELECTRICAL CONDUIT AND BUILDING STRUCTURE TO INSURE CODE COMPLIANCE.
- CEILING DIFFUSERS ARE SHOWN IN APPROXIMATE LOCATIONS. REFER TO LIGHTING PLANS AND REFLECTED CEILING PLAN FOR EXACT LOCATIONS.
- DUCT DIMENSIONS CALLED OUT ON DRAWINGS ARE INSIDE FREE AREA DIMENSIONS. ACOUSTICAL DUCT LINER ARE TO BE ADDED TO OVERALL MEASUREMENTS.
- ALL DUCTWORK AND PIPING WHICH PASSES THRU FIRE RATED WALLS TO BE FIRE STOPPED WITH APPROVED FOAM OR SEALANT. REFER TO SPECIFICATIONS FOR APPROVED MANUFACTURERS.

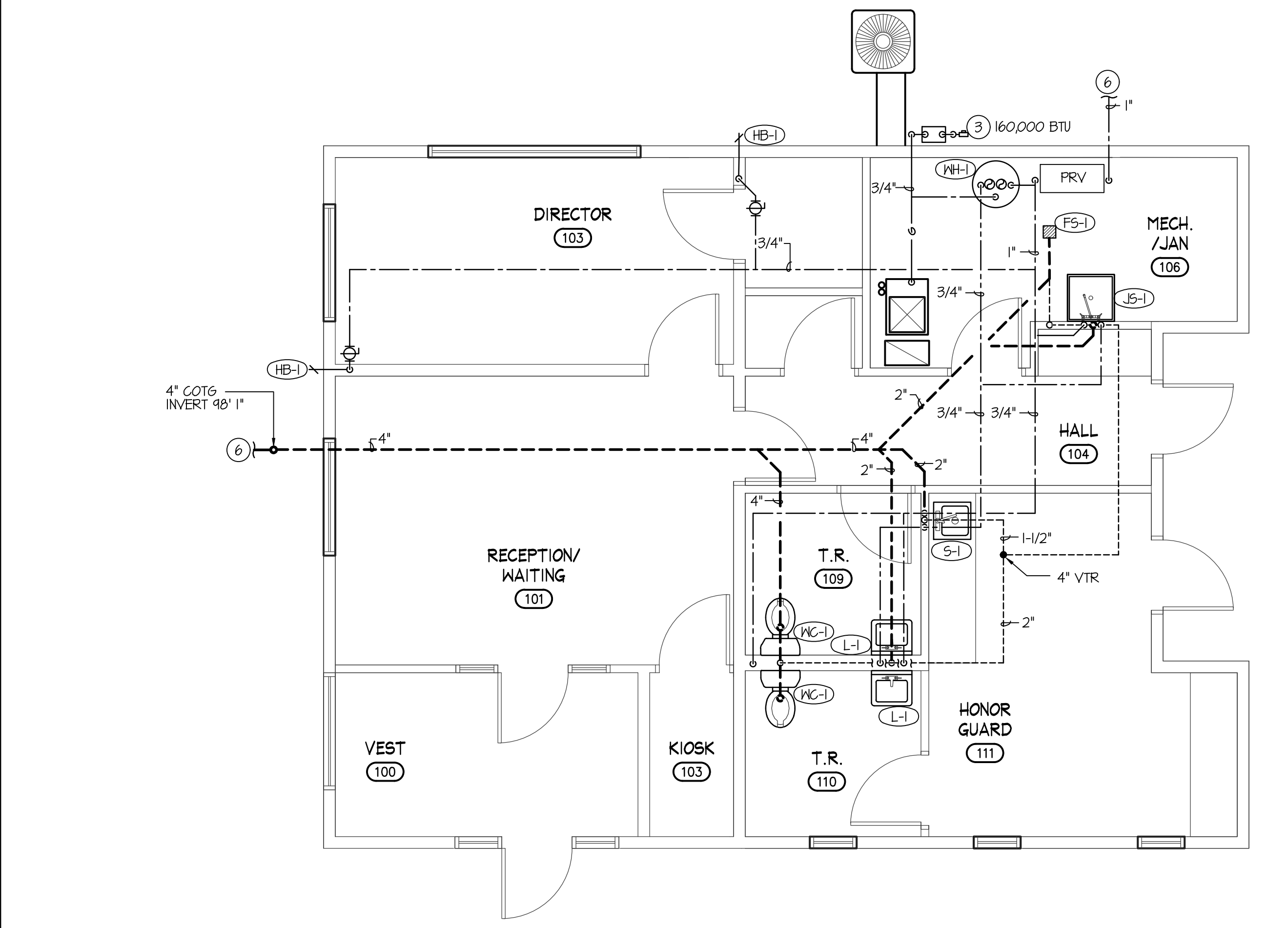


Blackfoot, Idaho  
**MECHANICAL & PLUMBING FLOOR PLAN**  
 DPW No. 17-603 | VA No. FAI ID-13-03  
 Southeast Idaho Veterans Cemetery

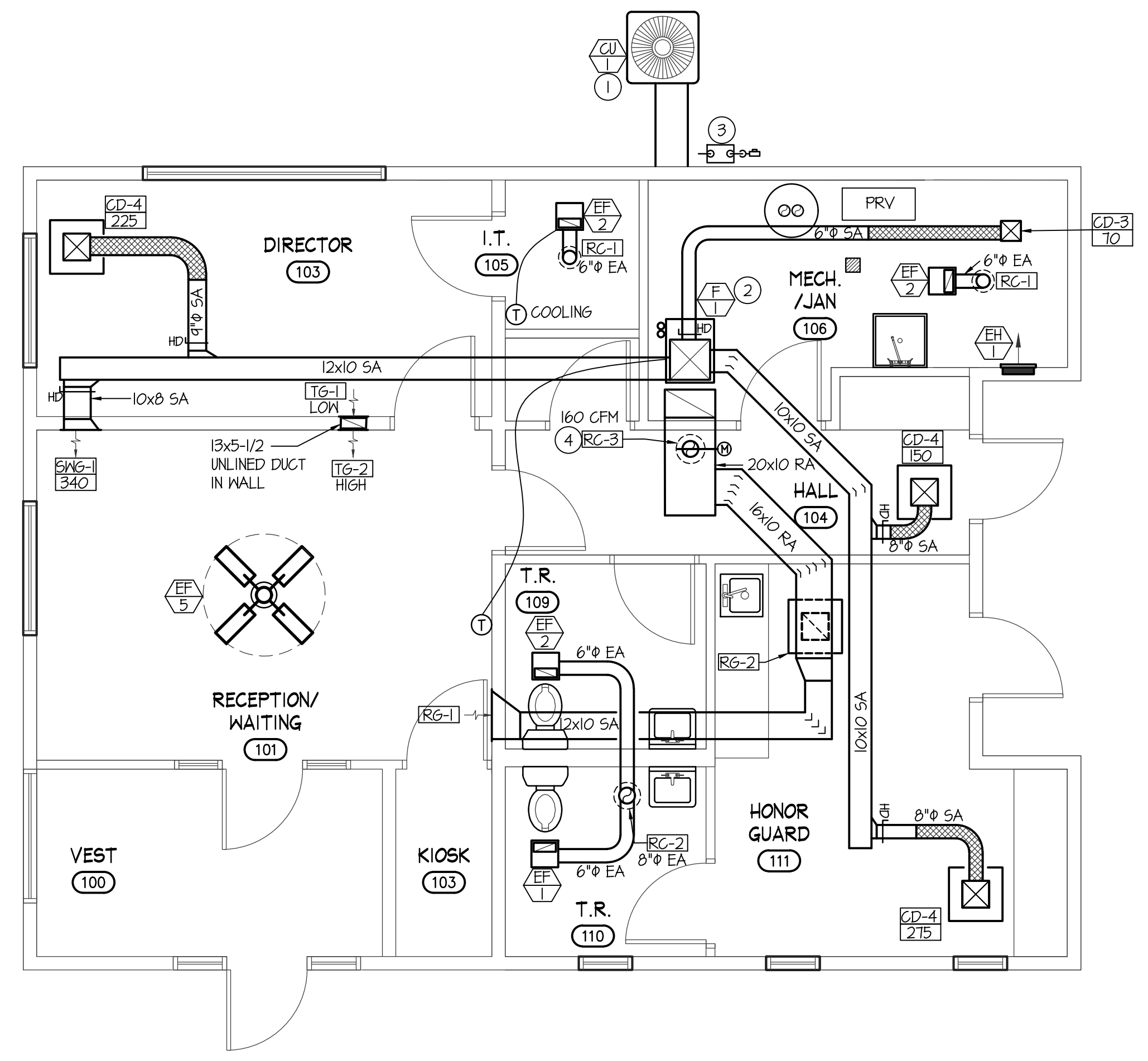
REVISIONS	
NO.	REMARKS

PROJECT INFORMATION	
CHECKED	DCS
DRAWN	TD
DATE	May 3, 2019
SBAS JOB NO.	18-144
DPW JOB NO.	17-603
VA JOB NO.	FAI ID-13-03
SHEET NUMBER:	

**Engineered Systems Associates**  
 1355 EAST CENTER  
 POCATELLO, IDAHO 83201  
 PHONE: (208) 233-0501  
 FAX: (208) 233-0529  
 EMAIL: esa@engsystems.com  
 ESA JOB NUMBER: 18094



**BASE BID ADMINISTRATION BUILDING PLUMBING PLAN**  
SCALE: 1/4" = 1'-0"



**BASE BID ADMINISTRATION BUILDING MECHANICAL PLAN**  
SCALE: 1/4" = 1'-0"

USER: TANNER LOCATION: VA/NOVA BLACKFOOT VETERAN CEMETERY/NOVA MAIN.DWG PRINT DATE: 5/3/2019 8:52 AM

BID DOCUMENTS